

# The Collection

PVCu, Composite & Aluminium  
Window, Door and Roof Systems



whiteline®

THINKING DIFFERENTLY

# About us

**Whiteline is renowned for crafting high quality windows, doors, and conservatories tailored to you and your home's needs.**

Crafted right here in Britain to impeccable standards, our products deliver optimal energy efficiency and security.

Whether in PVCu, aluminum, or composite, and with a captivating array of colours and finishes, we'll assist you from design inception to seamless installation through our accredited partners.

We trust you'll find our brochure both enlightening and inspiring. Should you need further details, feel free to reach out to your local accredited Retail Installer.

## WINDOWS

**When selecting new windows, it's crucial to consider more than just aesthetics. While style and character are important, energy efficiency and security are equally vital factors that can significantly impact both your lifestyle and the return on your investment.**

Crafted in the UK to the highest standards, Whiteline offers some of the best performing window products on the market today. Our PVCu windows are sleek and stylish, providing superior sound protection and heat retention.

Notably, our PVCu windows are recyclable and completely lead-free. Our advanced design reduces steel usage for window and door reinforcement by 50%, and all recycling processes occur domestically, further reducing our carbon footprint.

Our innovative profile and hardware designs enhance security, with select products certified as 'Secured by Design', a recognition by the Association of Chief Police Officers.

Many of our windows are also offered in aluminium. Engineered with low thermal expansion and inherent strength, our precision-crafted aluminium products offer an excellent alternative for contemporary and traditional settings alike, available in a diverse range of finishes to suit individual tastes.

# Materials

**Our products can be manufactured from three principal materials - **PVCu**, **aluminium** and **composite**.**

**For ease of use, we have identified each product type with a colour code so that you can easily identify which product types are available in which materials.**

## PVCu windows and doors

PVCu offers high levels of energy efficiency, security and at a very cost effective price.

Made in Britain from 100% lead-free PVCu and using energy efficient glass, we utilise the very latest manufacturing techniques and up-to-date engineering processes to ensure our products have the most advanced thermal properties. Many of our windows can achieve 'A+' ratings for energy efficiency whilst requiring the minimum of maintenance.

# Contents

## DOORS

**The entrance to a property communicates volumes about its owner, and installing a new door is an ideal way to make a significant statement. An elegant and stylish entrance door serves as the perfect introduction to your home.**

Whiteline's PVCu, aluminium, and composite doors epitomise premium entrance door designs, offering an extensive selection of both front and back doors. These doors boast a plethora of security features, coupled with a diverse array of styles and finishes.

Available in, a variety of RAL colors, woodgrain and colour foils with designer features, they ensure the security, thermal efficiency, and longevity expected from top-quality doors.

Each Whiteline door is meticulously manufactured to the highest standards, utilising the finest quality components and undergoing rigorous quality controls throughout production and distribution.

Tailored for the UK's home improvement market, our door selection encompasses French, bi-folding, and patio doors, alongside a comprehensive collection of front and rear entrance options.

### ALUMINIUM windows and doors

One of the world's most abundant and recyclable building materials with a number of unique attributes, aluminium is a great sustainable choice for your windows and doors. Offering thinner profiles than PVCu, aluminium is strong, durable and long-lasting whilst requiring only low levels of maintenance.

### COMPOSITE entrance doors

Our composite doors use a combination of either vinyl faced, solid core laminated timber slabs or high-insulation foam cores with engineered timber and polymer frames to create ranges of high-security, thermally efficient entrance doors, stable doors or French doors.

## PVCu WINDOWS

Slim <b>SASH</b>	4
Flush <b>SASH</b>	6
Revival Flush <b>SASH</b>	8
Revival	10
Sculptured <b>SASH</b>	12
Mock <b>SASH</b>	14
Chamfered <b>SASH</b>	16
Tilt & Turn	18
French - Flush and Stormproof	20
Bows & Bays	22

## PVCu DOORS

Residential - Flush and Stormproof	24
French - Flush and Stormproof	30
Stable - including Composite	32
Bifold	34
Sliding Patio	36

## ALUMINIUM

Classic	38
Classic define	40
Prestige	42
Prestige Door	44
Prestige Lift and Slide Door	46
Prestige Bifold Door	48
S1 Lantern Roof	50

## COMPOSITE DOORS

Sanctuary GRP Composite	26
Fortrezz Solid Core Timber	28

## CONSERVATORIES & GLAZED EXTENSIONS

Conservatories	52
Glazed Extensions	53

## OPTIONS

Door Visualisers	54
Door Hardware	56
Environmental	58
Accreditations & Guarantees	59







# SlimSASH

Slim sightline casement windows

PVCu

WINDOW

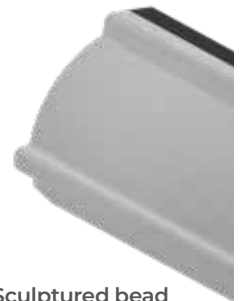


**The opening vents of our slim PVCu windows use a special slim sash profile exclusive to us.**

SlimSASH has a larger glass area, allowing more daylight into your home whilst still achieving outstanding energy efficiencies due to its 6-chambered construction detailing.

These slim profile PVCu windows have a chamfered 'putty-line' external profile, with a choice of matching chamfered or sculptured internal glazing beads if required. Manufactured from high impact modified PVCu to prevent warping or cracking and with fully welded frames, SlimSASH windows are the ultimate enhancement to any home.

SlimSASH is available in an extensive range of colour finishes with push button, keylockable handles also in a choice of colours, so you can easily create the perfect look and style to suit your home. Optional shootbolt locking systems and anti-intrusion hinge bolts can also be specified to further aid your security levels, ensuring both sides of your new windows are equally protected from potential forced attack.



Sculptured bead



Chamfered bead







# FlushSASH

Timber-inspired casement windows

PVCu

WINDOW



Flush bead

**One of the more recent and innovative additions to our range, flushSASH PVCu windows offer a traditional timber appearance with unique flush-fitting sashes to replicate the original designs, but without the cost and maintenance normally associated with their timber equivalent.**

Our flushSASH windows are low maintenance, as secure as all our other windows and they're weather resistant, as well as being fully recyclable at the end of their lifespan.

These traditional style products are crafted using environmentally friendly lead-free PVCu profiles and can be specified with thermally efficient double or triple-glazed sealed units for optimum energy performance.

Our flushSASH timber effect PVCu windows can be specified right up to 'A' grade energy ratings and have also been approved by various Local Authorities for use within certain conservation areas.

flushSASH windows are available in a wide range of authentic woodgrain colour finishes, as well as the more traditional black or white. Different finishes can also be specified on the inside and outside of the frames to allow for complete personalisation. Dual-colour is a popular choice with this particular product and reflects traditional frames where the outside is painted a different colour to the interior, allowing for greater flexibility with interior decorating.



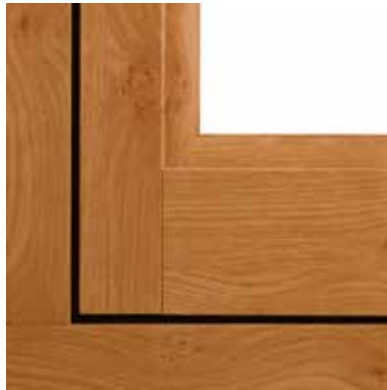


# REVIVAL® FlushSASH

Authentic timber-styled casement windows

PVCu

WINDOW



Deep cill

**Revival frame faithfully replicates period timber window styling, right down to the details of conventional timber hardware, such as a working stay and peg.**

Designed for every style of property, Revival takes a magical step back in time for the great looks of authentic timber window detailing but with all the benefits of low maintenance PVCu.

The unique new 85mm deep frame incorporates seven chambers, for optimal thermal performance and strength, with a classic, deep sculptured edge detail and mechanically-jointed transoms and mullions that replicate traditional

mortise and tenon joints.

Naturally we then had to develop a new cill that had the same depth as its timber counterpart. Another exclusive to Whiteline, the 50mm thick cill is 163mm deep and features a traditional throat drainage detailing for a realistic timber window style.



Flush bead



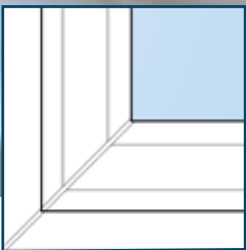




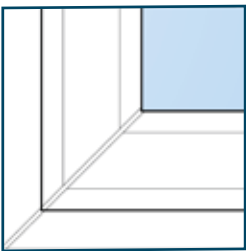
Deep outer frame casement windows with a choice of sash

PVCu

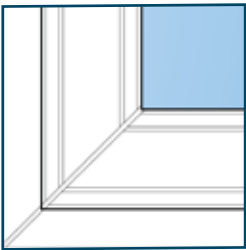
WINDOW



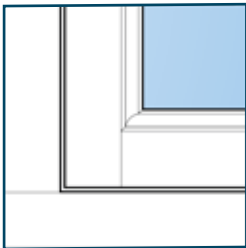
Slim**SASH**



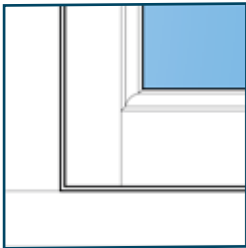
Chamfered**SASH**



Sculptured**SASH**



Flush**SASH** butt jointed



Flush**SASH** DBR butt jointed

Revival was designed for Flush**SASH** windows, however, the deep Revival outer frame can also use any of our other sash designs - the Sculptured**SASH**, Chamfered**SASH** and Slim**SASH**.



Sculptured**SASH** installed into a Revival outerframe and using our unique deep cill.







# SculpturedSASH

Sculptured profile casement windows

PVCu

WINDOW



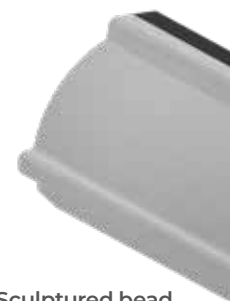
**SculpturedSASH windows use a 'softline' decorative moulding around the frame and sashes rather than the bevelled, sharper appearance of the ChamferedSASH. Apart from this visual difference, they have the same specification and offer the same high levels of performance.**

SculpturedSASH can be specified with a matching glazing bead or, use the glazing bead of the ChamferedSASH for an individual, bespoke aesthetic.

Energy ratings far exceed current Building Regulations and easily reach an A-Rating. For greater insulation from the cold we can offer triple-glazing which further adds to the window security.

PAS24 upgrades are available for enhanced levels of security if ever considered necessary - again, all of our windows already offer multi-point locking as standard.

As with all of our windows, we can offer acoustic glazing for reducing sound pollution in areas subject to excessive noise.



Sculptured bead



Chamfered bead





# MockSASH

Sculptured casement windows with a mock sash horn

PVCu

WINDOW



Sculptured bead



Chamfered bead

**MockSASH windows are the perfect, cost-effective alternative to traditional vertical sliding sash windows.**

The design is suited to the more vertical proportions of original sash windows with a typical 50/50 split in height with the top part being an outward-opening sash with a fixed pane below.

The MockSASH refers to the run-through sash horns in the bottom corners of the opening sash.

An elegant solution to an aesthetic problem seen throughout the country.







# ChamferedSASH

Chamfered profile casement windows

PVCu

WINDOW



Sculptured bead



Chamfered bead

**ChamferedSASH windows feature a beveled moulding around the frame and sashes, in contrast to the 'softline' look of SculpturedSASH.**

Aside from this visual distinction, they share the same specifications and deliver the same high performance. ChamferedSASH can be customized with either a matching glazing bead or the ChamferedSASH glazing bead for a unique, bespoke aesthetic. Alternatively, they can also use the sculptured glazing bead.

Energy ratings significantly surpass current Building Regulations, easily achieving an A-Rating. For enhanced insulation against the cold, we offer triple-glazing, which also increases window security.

If needed, PAS24 upgrades are available for even higher security levels—though all our windows already feature multi-point locking as standard.

Additionally, we provide acoustic glazing options to reduce sound pollution in noisy areas.





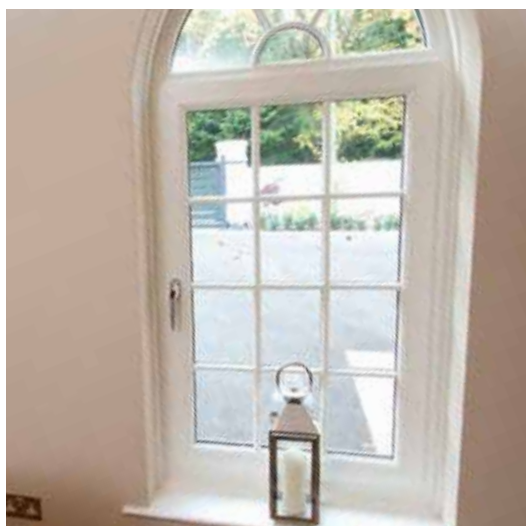
# Tilt & Turn

Inward opening, multi-function windows

PVCu

ALUMINIUM

WINDOW

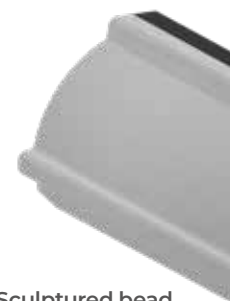


**Offering easy ventilation and cleaning, our dual functioning tilt and turn window is a great addition to any home. Open it like a door (inwards) or tilt the top of the sash into your room to provide secure ventilation without allowing access into the home, it offers an excellent solution especially if you have young children.**

They are versatile, secure and easy to operate. With a simple twist of the handle, the window can be tilted inwards from the top for ventilation. Re-closing the vent and then doing another half turn of the handle allows you to open the window the whole way from the side to let the outside in.

The design provides you with a low maintenance, practical window which combines modern styling with easy operation and perfect for larger window installations or modern extensions.

All our Tilt & Turn windows have the glass fitted from the inside for added security meaning intruders cannot remove it from the outside. Low level black cushioning gaskets increase the visible sight-lines of the product and with an array of glass, colours and furniture options, this product is about as versatile as it gets.



Sculptured bead



Chamfered bead







# French Windows

Double-hung **stormproof** or **flush** casement windows

PVCu

ALUMINIUM

WINDOW



**Our French windows have all the same great features as our casement windows but with a much larger opening area, providing an elegant solution that meets fire escape regulations where required.**

All our French windows are manufactured to the highest standards, using premium quality components which are subject to rigorous quality checks throughout the manufacturing process.

Roller Bolts contract in order to lock the sash. Raising the handle by 90° releases them from the keep and allows the window vent to open.

The upper and lower parts of the locking mechanism contain shoot-bolts as well as the roller bolt, offering up to a 6 point locking mechanism which can be further enhanced by fitting optional hinge bolts.

The hinges themselves not only enable a full 90° opening but when opened, will slide across to allow access to the outer sash surface from the inside, which allows for easy cleaning of the whole window.







# Bay & Bow Windows

Outward projecting window spaces

PVCu

ALUMINIUM

WINDOW



Bow and bay windows are two similar yet very separate styles of replacement window.

Bow windows, as their name suggests, extend from the exterior walls of your home in a 'bow' shape and consist of three or more window panels to form a curved appearance.

Bay windows extend from the exterior walls but unlike bow windows, they sit upon the outer wall of the home and therefore follow the property contours rather than protrude from it.

We offer a comprehensive range of styles, materials and colours for both bays and bow windows, including structural connecting joining poles and base plates. Adding a bay window is a great way to

project more light into your home creating a bright, fresh space for you to enjoy.

Our bay windows match all our window styles, so the choice and variety is enormous not only in the type of window, from casement to sliding sash, but also in the colour and finish.

## There is a range of configurations:

- Square bays
- Bow bays
- Single end bays
- Corner bays
- Oriel bays





# Residential Doors

High performance entrance doors

PVCu

ALUMINIUM



DOOR

**We can offer a comprehensive range of double-rebate entrance doors in PVCu or aluminium, all being available in a wide range of colours, finishes and formats to best compliment your home.**

Eco-friendly PVCu profile uses calcium based stabilisers rather than lead that many other manufacturers use.

Optional aluminium low thresholds offer additional ease of access. Our PVCu doors come as standard with low-line glazing beads and low-profile gaskets

for improved security and improved sight-lines.

All our PVCu entrance doors are fitted with dual weather seals for extra protection against the elements and our special hook bolt locking systems and dedicated hinges ensure peace of mind and a high level of security for your home.

Sealed unit glazing with a range of energy efficient and decorative glass options are also available to you to help you fully personalise the door to your exacting standards.



## Flush Residential Doors

**Flush frame and leaf emulate traditional timber door designs.**

Complementing the Flush French doors and FlushSASH windows and completing a traditional timber aesthetic with all the benefits of a modern, low-maintenance construction and modern security.

# Sanctuary





# Composite Doors

GRP composite entrance doors

COMPOSITE



DOOR



**The Sanctuary composite entrance door prioritises thermal insulation and timber door aesthetics.**

The indoor and outdoor faces of the doors are crafted from GRP (Glass Reinforced Plastic) - a material used in demanding products such as cars and boats to form a very strong skin.

These door faces undergo compression moulding to create timber-style recessed and 'fielded' panels with an authentic woodgrain appearance.

This results in exceptional thermal efficiency, boasting up to nine times the insulation of an equivalent timber door.

Featuring steel-reinforced frames, three dedicated door hinges, and multi-point hook/deadlock locking systems rigorously tested, along with optional anti-pick/anti-drill door lock cylinders, our composite doors offer safety and peace of mind.

Not only do our doors make a great first impression, but they also ensure lasting durability, style, energy efficiency, and security.

Utilise our online door visualiser to design your own bespoke door, tailored to your preferences and specifications.



**fortrezz**  
*Exclusive*





# Solid Timber Core Doors

Precision-built for strength. Styled to impress.

COMPOSITE

*Exclusive*



DOOR



**The extensive collection of fortrezz® Composite Doors embodies the perfect blend of modern materials, cutting-edge manufacturing techniques, and unparalleled aesthetic appeal.**

Featuring an exceptional 48mm thick cross-bonded, veneered, and laminated solid timber core, our doors offer unparalleled strength and dimensional stability, setting them apart from other products in the market.

Comprising a remarkable 17 separate laminations, they are nearly 10% thicker than most other composite doors available today. This exceptional thickness ensures unmatched durability, aesthetic appeal, and security, providing you with absolute peace of mind.

Manufactured in the UK, our doors adhere to all necessary quality standards, guaranteeing reliability and excellence.

Equipped with the highest-grade key locks, our doors undergo rigorous 3\* and SOLD SECURE security testing and approval, setting the highest standard in today's marketplace.







# French Doors

High performance **stormproof** and **flush** entrance doors

PVCu

ALUMINIUM

DOOR



**Our French doors are a beautiful alternative to sliding patio doors and are ideal for traditionally designed homes, bringing a touch of elegance and style with them.**

They have the advantage of allowing the full width of the door space to be opened and are available in standard white finishes, woodgrain foil finishes or the comprehensive range of RAL colours when choosing the aluminium alternative.

Built to be robust and secure, with multi-point locking security fitted as standard, providing superior performance and weather sealing characteristics.





# Stable Doors

Versatile, stylish and secure doors

PVCu

COMPOSITE



DOOR

More versatile than a standard PVCu door, our stable doors provide maximum ventilation without the need to open the whole door leaf, keeping children and pets safely indoors.



Made from two individual door leaves securely coupled together, the door can operate as a normal residential door, with the two openings functioning in tandem. A simple turn of a handle disengages the coupling, allowing the top leaf to operate

independently of the bottom.

For extra security and as standard all our external PVCu stable doors come with a multipoint hook locking system and reinforced frames and panels to ensure maximum security for you and your family.





# Bifold Doors

Multi-leaf patio doors

PVCu



DOOR

**We offer bifolding doors in a selection of different materials which glide to allow entire façades of your home to be opened, giving you the impression of almost 'living' in your garden.**

Few products can offer such a dramatic transformation. When opened, our bi-fold doors are slim and unobtrusive and when closed, they offer all the benefits of a modern doubled-glazed product. Open just one bi-fold panel as an entrance or fold all of them back to draw the ambiance of your garden directly into your home.

Our bifold doors can either be stacked open at one end, at both ends, or one panel can be opened like a conventional single door or as a pair. You can choose the same colour for both sides of your bi-fold doors or a different colour for the side that faces into the room should you so desire, the choice is yours.





# Sliding Patio Doors

Next-generation sliding patio doors

**Our Sliding Patio Door range is available in PVCu with a sculptured appearance, and a slim aluminium version with a slim interlocking meeting rail. They all are available with the latest design features included as standard, plus a host of customisable options to add a warm, contemporary feel to any home.**

The PVCu Sliding Patio Door comes fitted with a revolutionary multi-wheeled 'air glide' system, making the sliding perfectly balanced as it glides along the track. The built-in brushes gently sweep away any minor debris each time the door is closed, aiding its silent operation.

With cleverly hidden 'crash' stops in the operating mechanism and a bespoke wrap over threshold to prevent everyday scuff marks, our PVCu sliding patio doors will look as good years down the line as the day they were installed.

Our PVCu sliding patio doors are the most thermally efficient products on the market today, using a uniquely designed 5-chamber system which prevents cold air getting in by trapping the temperature inside. They also utilise modern locking mechanisms with combinations of hook bolts and shoot-bolts for unparalleled security.

DOOR









# Classic

## Ultra-slim casement windows

ALUMINIUM

WINDOW



Flush frame

Contemporary sash

Contemporary sash

**Built around an innovative Thermlock® multi-chamber thermal break, our windows use a patented construction method that offers unsurpassed levels of security.**

Creating windows that are strong and durable, yet with slim frames that maximise the light flooding into your home. Sheerline aluminium windows are also available in a wide range of colours, letting you express your home's character

The Classic window is available in either a contemporary (flat-faced sash) or heritage (stepped sash) aesthetic. The slim frames and sashes enable a visible sightline of just 59mm allowing maximum light in and a wider view back out.


This slim window design allows for a wider and taller glass area which means the window takes even greater benefit from the high-technology glass units.

Flush frame

Stepped sash

Stepped sash





With a stepped and a flat profile, the Classic range already covers many architectural styles in the UK.

Until now though, a proper 'putty-line' timber style wasn't represented and in response to this, Whiteline have developed **Define...**

# Classic Define

Slim sightlines exclusively from Whiteline

## ALUMINIUM



## WINDOW



The Classic Define window is a development of the Contemporary and Heritage designs - rather than a flat-faced or stepped sash aesthetic, we've created a true 'putty-line design that emulates many traditional timber windows.

The 'bevelled' style isn't limited to emulating original timber windows though. It's clean lines are equally suited to modern properties too, especially with the Classic's inherently slim sightlines!





**The Classic Heritage Door perfectly blends timeless design with modern performance, making it ideal for both internal and external use.**

Inspired by nearly 200 years of steel window and door craftsmanship, it features square astragal bars and Art Deco-style horizontal layouts. This door delivers a heritage aesthetic with modern aluminium's strength, durability, and efficiency.



**HERITAGE  
4-Bar Residential Door**  
Single door  
in Agate Grey



**HERITAGE  
2-Bar Residential Door**  
Single door  
in Metallic Bronze



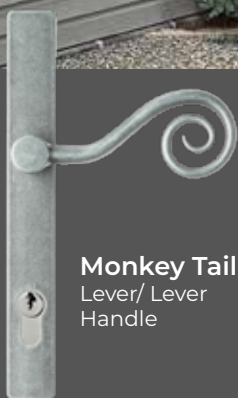
**DOUBLE GLAZED  
U-VALUE\***

\*Subject to specification



# Classic HERITAGE

Timeless style for inside and out



**Monkey Tail**  
Lever/ Lever  
Handle



**Noble**  
Lever/ Lever  
Handle



**Sculptured**  
Lever/ Lever  
Handle



**Architectural**  
Lever/ Lever  
Handle



**Heritage**  
Lever/ Lever  
Handle



**Our Heritage range wouldn't be complete without traditional handle options.** Choose from the Balmoral handle or three classic lever designs. Each adds a refined, vintage touch to complement the collection's timeless look.





# Prestige

## Versatile opening casements

### ALUMINIUM



### WINDOW



Flush frame

Contemporary sash

Contemporary sash

**The Prestige casement windows, including the Tilt & Turn, shares the same sightlines and dimensions with the residential, patio and bi-fold doors. They align perfectly for a truly balanced aesthetic - an important element when considering a particular elevation on your home.**

However, Prestige and Classic can easily be used together if they're separated from each other - the difference is only 8mm which is negligible if they're not joined to one another.

The real benefits of this slightly larger frame size is the increased thermal insulation which exceeds current Building Regulations in double-glazed form. When triple-glazed, Prestige can reach a 'U-Value' of just 1.0.

The thermal and acoustic performance can be taken even further because the larger frame enables a 44mm triple-glazed unit to be used rather than the typical 36mm units used in most triple-glazed windows.

Concealed drainage means no more drainage caps on the outer frame too!

Flush frame

Stepped sash

Stepped sash





# Prestige

## High-performance door system

### ALUMINIUM

### DOOR



Flush frame

Contemporary sash

Contemporary sash

Flush frame

Stepped sash

Stepped sash

**Prestige doors system covers both single and French doors, so you can be sure of finding the perfect entrance for your home.**

We offer three thermally broken aluminium thresholds, (alongside continuous frame options), which have been tested to the requirements of Part M, ensuring there's no weak point in the

thermal performance of your door and helping prevent condensation build-up. Continuing the high end aesthetics, no fixings are visible in the threshold, and designs follow the same clean, refined looks of our windows.





# Prestige Lift & Slide

Sleek and strong sliding patio doors

## ALUMINIUM



## DOOR

**Introducing the Prestige Lift & Slide, a vital addition to the Prestige door lineup, designed to meet the demand for high-performance patio doors. This premium offering enhances panoramic views, seamlessly complementing the existing Prestige Bi-fold range.**

Featuring Sheerline's innovative Thermlock® technology, our Lift & Slide Patio sets a new standard in thermal efficiency within the industry. Fully compliant with Part L regulations, it achieves an impressive U-value of 1.4 with standard double glazing and 1.0 with triple glazing.

Available in both dual and triple track configurations, it caters to a wide range of openings.

Utilising bespoke Lift & Slide gearing, this system is built on a reliable platform, ensuring exceptionally smooth and dependable operation.

Concealed buffers integrated into the head of the door assist in softening the opening and closing action of the sash.

Our patented sealing arrangement guarantees weatherproofing, maintaining a tight seal against the elements.

Flush door jambs eliminate snagging and contribute to a sleek, uncluttered aesthetic.





# Prestige Bifold

Slim and secure bifold doors

## ALUMINIUM



## DOOR



**Prestige bifolds redefine boundaries, seamlessly blending your indoor and outdoor spaces to create a heightened sense of openness.**

With slender 138mm sash-to-sash sightlines, natural light floods your interior, maintaining a bright and airy atmosphere even when the doors are shut, regardless of your chosen style or configuration.

Every detail is meticulously crafted, evident in features like the one-piece stainless steel tracks in both the head and threshold, which incorporate concealed drainage for smooth and reliable operation.

Ingenious concealed drainage eliminates the need for unsightly drainage cover caps, ensuring a clean aesthetic throughout.

No element of the door is overlooked, as evidenced by the implementation of unique tri-material gaskets featuring a low-friction coating, guaranteeing smooth performance and dependable sealing.

For added security, Prestige bi-folds feature full-length security interlocks on applicable door styles, offering peace of mind as a standard feature.





# S1 Lantern

Elegant and durable lantern roofs

## ALUMINIUM



**Selecting the perfect roof lantern for your home is a significant decision. It should strike a balance between inviting ample natural light, retaining warmth indoors, and fortifying your home against potential intruders.**

By choosing the right roof lantern, you can bask in increased sunlight during the day and gaze at breathtaking night sky views, all while fostering a sense of spaciousness and tranquility within your home.

This is precisely why we've meticulously designed the S1 aluminium roof lantern to cater to your every requirement.

Drawing upon years of expertise, we've integrated numerous innovative concepts

to produce a warmer and slimmer and more secure roof lantern.

S1 is the only lantern in the UK that provides Secure By Design. Featuring Thermlock® multi-chamber thermal technology, our roof lanterns help to minimize heating costs while ensuring optimal warmth retention. The incorporation of deep internal bars results in an exceptionally sturdy structure capable of spanning up to 3.2 x 6m without the need for tie bars.

With its sleek ultra-low line aesthetics, the S1 roof lantern exudes a sophisticated architectural appeal, further accentuated by its durable powder-coated aluminium finish both inside and out.





# Find the perfect match

Customise your aluminium to match your PVCu



With a choice of seven foils, you perfectly pair aluminium and PVCu to elevate your installations with seamless quality and get the stylish finish you deserve.



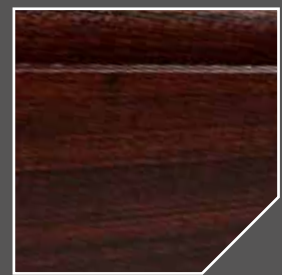
White



Anthracite Grey



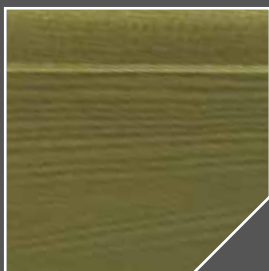
Oak



Rosewood



Chartwell Green



Irish Oak



Black









# Conservatory Roofs

A wide range of glazed and composite solid roof systems

PVCu

ALUMINIUM



**With a vast number of options to choose from, Ultraframe conservatories give you the extra space you've always dreamed of, no matter what your conservatory design or style requirements might be.**

Ultraframe conservatories are the perfect way to bring the outdoors indoors, providing an elegant focal point for get-togethers or a warm and welcoming place in which to relax and unwind.

For a cost effective bespoke modern conservatory design, look no further than

Ultraframe. With an extensive collection of conservatories to choose from, you can be sure to find the right style to suit your home.



# Door Visualisers

Bespoke composite door visualisers



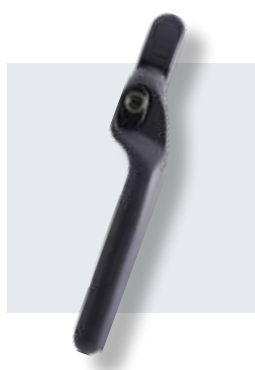
With a door range as diverse as ours it can be very difficult to convey the vast range of styles and finishes just with brochures and our website. We have invested in our own digital technology to create 'virtual' products which demonstrate the differing styles of a Sanctuary or Fortrezz door you maybe interested in.

On top of this you can then colourise them with the finishes available.

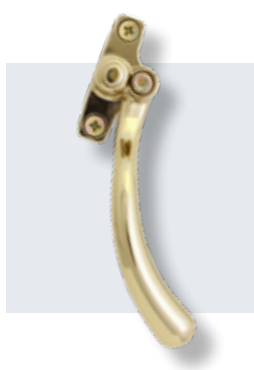
Finally, you can take a photo of your own home on to which you can superimpose your visualised choice of door.

# Window Hardware

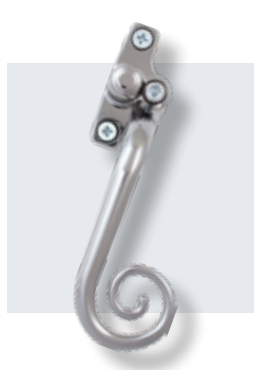
A wide range of styles to suit all property styles



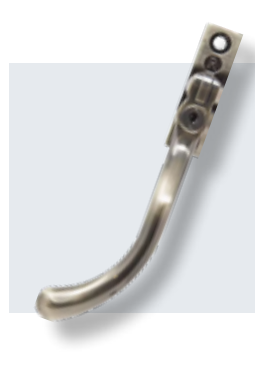
**Offset**



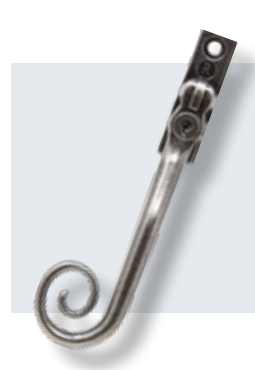
**Traditional**  
Tear Drop



**Traditional**  
Monkey Tail



**Contemporary**  
Tear Drop



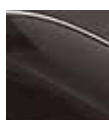
**Contemporary**  
Monkey Tail

## Offset

Casement Fastener  
Window Handle



White



Black



Chrome



Gold



Graphite



Antique  
Black



Satin



Bronze



Anthracite  
Grey

## Traditional

Teardrop and  
Monkey Tail Handle



Antique Black



Chrome



Gold



Graphite

## Contemporary

Teardrop and  
Monkey Tail Handle



Black



Polished  
Chrome



Gold



Graphite



Satin  
Chrome



Antique  
Bronze



Pewter  
Patina



## TESTING

Rigorous prohesion testing, where an electrolyte spray sequence with high temperature drying cycles to concentrate salt deposits on all hardware surfaces.



**4-season  
tested**



**1000 hour  
prohesion tested**



**colour  
consistent**

Designed to expose even the slightest of coating weaknesses, is the only method of corrosion testing to provide real peace of mind when it comes to ensuring long-lasting performance in the real world.

### SALT SPRAY TESTING



doesn't reflect  
real world  
conditions

vs

### PROHESION TESTING



accelerated  
real world  
conditions

CLASSIC, ARCHITECTURAL, HERITAGE, FORGED AND STAINLESS STEEL ALL TESTED TO THIS STANDARD

## STAINLESS STEEL

**Flat and rounded stainless steel bar handle with matching accessories create a perfect contemporary appearance.**

Whatever the style of door you

need, we have a bar handle to suit. Inline or Offset bar handles are available in sizes from 400mm to 1800mm in marine-grade 316 Stainless Steel.

For doors with a difference, maybe a new 'flat-profile' bar handle would be your preferred style?



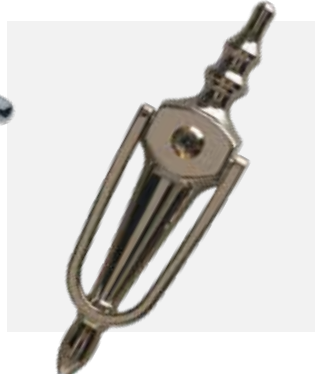
## Classic

**The Classic Collection offers timeless style, clean lines, and our widest range of finishes.**

The original and most popular

of our ranges, it features the Balmoral door handle and the Nu Mail letterplate. The ability to match hardware across a range of

windows and doors with a choice of 12 different finishes means there is an option for everyone.



# Door Hardware

A wide range of styles to suit all property styles

## ARCHITECTURAL

**The Architectural Collection is bold in style offering door furniture with visual impact.** The squarer design follows throughout,

from the backplate of the door handle to the letterplate surround, from the knocker to the window handle.

If you like statement hardware, then this is the range for you.



## Heritage

**The Heritage Collection consists of door and window furniture with period charm and modern durability.** The beautifully sculptured backplate on the

door handle fully suites with the surround on the letterplate for a perfectly matching set. The inward opening letterplate flap mirrors more traditional styles of

letterplate whilst the addition of the bull ring knocker, completes the sophisticated look of any period style door.



## FORGED

**The Forged Collection provides an authentic, period look to any door.** Three traditionally styled handles and a Spire knocker have been carefully crafted to create

the look of aged furniture while benefiting from state-of-the-art manufacturing. Choose from the Sculptured, Noble and Monkey Tail door handle or the beautiful Spire

door knocker, ideal choices for period buildings and old cottages. All are available in Pewter and Forged Black.





# Environmental

Materials, manufacture and sustainability



## PVCu

**With environmental issues being at the forefront of today's society it is very easy to confuse modern PVCu windows with the damaging, non-degradable plastics so abundant in everyday life.**

### IT'S NOT PLASTIC!

uPVC (unplasticised PolyVinyl Chloride) was the term used in Britain before the name was changed to PVCu in the late 1980s to fall in line with the rest of Europe. However, many people assume that uPVC and PVCu refers to different materials - they are exactly the same!

### NON-POISONOUS

Differences do occur within the PVCu itself by way of stabilisers - many companies have used lead whereas we have only used calcium. Therefore the material itself is non-poisonous in use and during recycling.

### RECYCLABILITY

PVCu windows use less energy to produce in a factory in comparison to both aluminium and timber windows. Our PVCu window is 100% recyclable and can be recycled up to 10 times, giving each window an estimated life span of 350 years!

### ENVIRONMENTAL IMPACT

The material itself, it's reduced manufacturing and recycling costs and long term product-life leave a small carbon foot print whilst the ongoing energy savings are higher, with more PVCu windows achieving BFRC 'A' ratings than other materials.

## ALUMINIUM

**Aluminium is known for being lightweight, durable, and low maintenance, while also aiding the high performance of our systems due to its immunity to UV, low conductivity, and fire resistance.**

### RECYCLABILITY

Up to 90% of all aluminium used in construction is recycled, using 95% less energy to manufacture than its primary production and with no deterioration in quality.

### LONGEVITY

Aluminium does not age like other organic materials and needs no protection from ultra-violet light. Its overall life-cycle is more environmentally friendly due to the minimum energy required in maintenance and the well-established, proven design life of aluminium assures that it will provide a long term solution year-on-year with the guarantee of 100% recyclability at the end of a building's life.

# Accreditations

## Our accreditations and certification



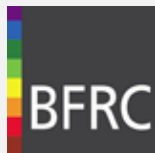
BM TRADA Product Certification provides assurance to specifiers, contractors and purchasers that products will perform to an agreed standard. It provides independent certification, testing and inspection, training and technical services all over the world. A range of Whiteline PVCu products are covered by the BM Trada Certification scheme.



FENSA has been set up by the Glass and Glazing Federation (GGF) and other industry bodies, in response to Building Regulations for double glazing companies in England and Wales. When replacing windows and doors, homeowners must comply with current standards and ensure they obtain a certificate from FENSA (or similar approved) or Local Authority Building Control.



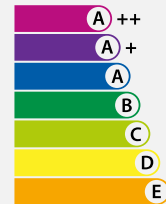
This is the official UK Police flagship initiative supporting the principles of 'designing out crime'. Whiteline are very proud to have gained the Secured by Design accreditation for many of our products.



Whiteline is proud to be a member of the British Fenestration Rating Council, the UK's national system for rating Energy Efficient Windows



The UKCA (UK Conformity Assessed) marking is a new UK product marking that will be used for goods being placed on the market in Great Britain (England, Wales and Scotland). It covers most goods which previously required the CE marking.



The Window Energy Ratings scheme was launched in the UK by the BFRC, a Government supported independent body which allows consumers to reliably compare one product with another.



Whiteline double-glazed PVCu casement windows can achieve the 'greenest' Window Energy Ratings (WER) rating of A+ for energy efficiency, if specified.



Chamfered**SASH**

Sculptured**SASH**

Flush**SASH**

Slim**SASH**

*Sanctuary*




**fortrezz**

*REVIVAL*

**Define**

**ColourTEK®**



info@**whiteline**.co.uk   0800 652 3151   **whiteline**.co.uk     

**BR0071 'The Collection' Brochure 2nd Edition 2025**

All rights reserved © 2025 Whiteline Manufacturing Limited

In our ongoing quest to provide the highest quality products our designs and specifications are subject to change without any notice. Except as allowed by law, no part of this publication may be reproduced in any form without written consent.

