

Put the style back
into your home

Vertical Sliding Sash Windows



ECOSlide PVC-U Sash Windows will Enhance your Home

Vertical sliders are a traditional style of window. Commonly found in older properties, they are usually manufactured from timber. This elegant type of window is a popular replacement in period properties, with its design giving homes a sense of sophistication and charm that a traditional casement window can't match. But real sash windows can be expensive – which is why homeowners look to more affordable alternatives like PVC-U.

Whether you live in an older property or a more modern home, **ECOSlide** PVC-U sash windows are a stylish and cost-effective solution. They excel both as like-for-like replacements and as alternatives to other styles.

Choose from an extensive range of colour, finish and hardware options, and you can perfectly tailor an **ECOSlide** window to match the look and feel of your home.



Cutting Energy Bills and Carbon Footprints

With energy bills soaring, homeowners are looking for one thing more than any other – energy efficiency.

A+ rated as standard, and delivering U Values of just 1.3 W/(m²K), **ECOSlide** is the perfect choice for balancing timeless style and twenty-first century performance.

Windows to Suit your Style

If you're replacing existing sash windows, we can offer a wide choice of styles to match them as closely as possible, and maintain the character of your home.

We can replace bay-style windows including splay and box bay windows. These are a common feature in older properties, and when combined with a sliding sash window their installed appearance is very impressive.

We can also replace arched and swept head windows. These shaped styles are incredibly eye-catching. **ECOslide** PVC-U sash windows are bespoke-manufactured to your exact requirements to maintain the charm and appeal of your home.

Other design options are available with internal Georgian bar or external astragal bar detailing, to ensure your new windows are as authentic as possible.



Sliding

ECOslide PVC-U sash windows primarily function like wooden box sash windows, with both the top and bottom sashes sliding up and down to suit your ventilation requirements.

Convenient and simple to operate, the two sliding sashes within an outer frame work independently of each other on a balanced load mechanism, designed to hold the sash at any height.



Tilt & Easy Clean

ECOslide PVC-U sash windows are incredibly low maintenance, requiring only a quick wipe down with a damp cloth to keep them looking as good as new.

The window sashes feature an inward-opening tilt facility to allow easy and safe cleaning of the outside frame and glass from inside your home.

This is particularly useful for second storey windows, or windows positioned in a hard to reach place, like above a conservatory.

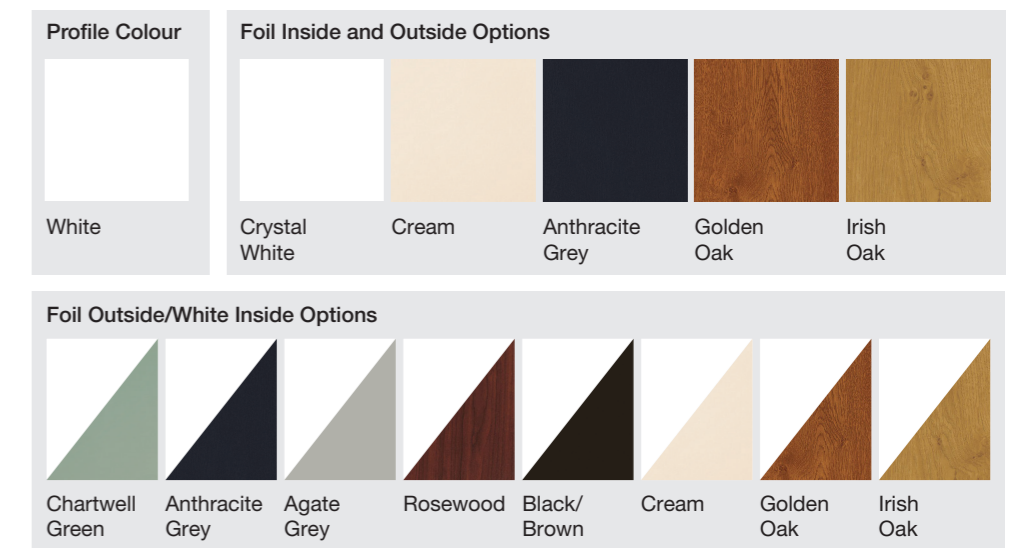




Colour & Foil Options

Timber box sash windows were always painted, and you can replicate this look. If you want a more natural effect, our Crystal White, Cream, Golden Oak and Irish Oak foils give a realistic woodgrain appearance that mimics the grained texture and appearance of an original timber window.

We also offer colour outside/white inside options in Chartwell Green, Anthracite Grey, Agate Grey, Rosewood, Black/Brown, Cream, Golden Oak and Irish Oak. With this option, you can choose the external colour you like, while maintaining a white interior to better suit your home's decoration.



Colours are shown as a guide and are only as accurate as the printing process allows

Spraying and Colour Matching

Our on-site paint shop enables your **ECOSlide** PVC-U sash windows to be spray painted to match virtually any RAL code or colour.



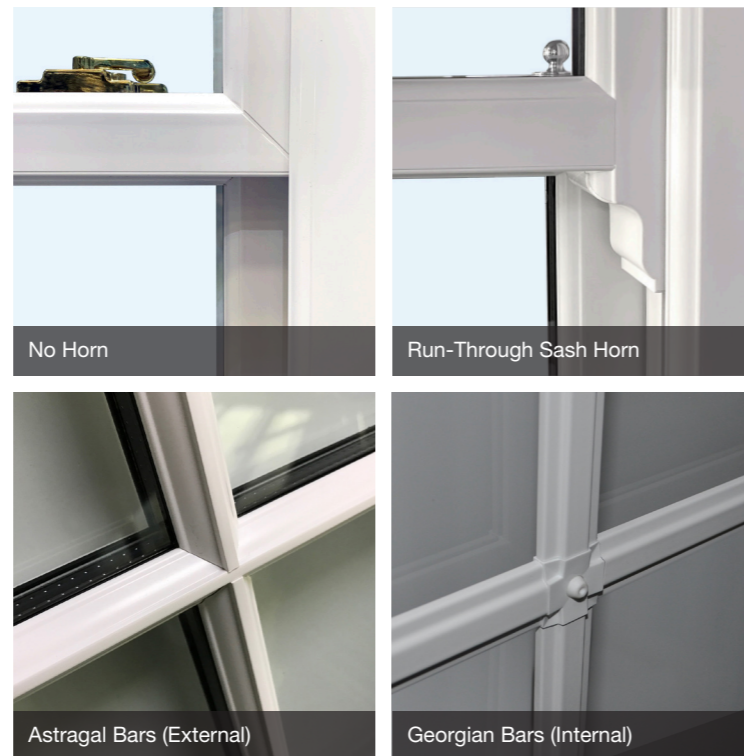
You can personalise your vertical sash windows and colour co-ordinate them to match your property or just to suit your own personal taste. Our optional spray painted finish is applied to the highest standards and will provide a unique and colourful addition to your home.

Attention to Detail

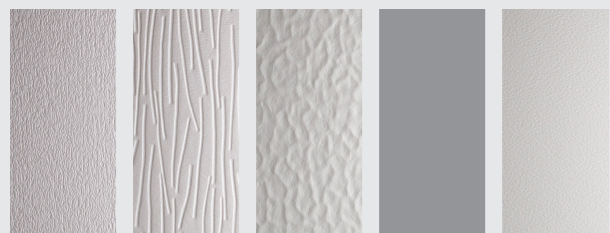
It's the little details that help make **ECOSlide** sash windows as authentic as possible. Our PVC-U windows are designed to be smooth and sleek with slim profile sections giving a better appearance, which is pleasing to the eye as well as offering improved views from the inside and outside.

To complete the timber-like appearance, our windows incorporate the same stylish features found on original timber sash windows such as astragal bars, decorative sash horns and traditional-style operating hardware.

The jambs, sash sections and meeting rail are all engineered to look just like a timber sash window, giving you truly authentic-looking new windows.

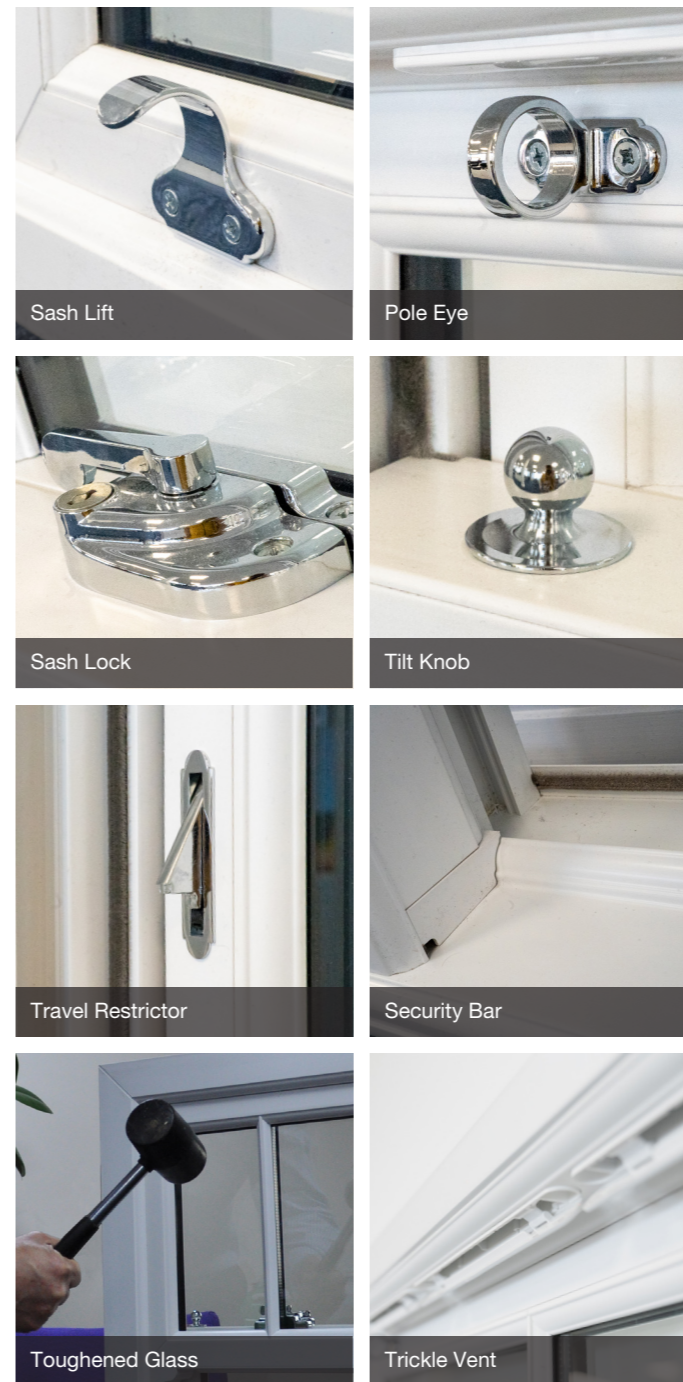


Glass Options



Contora™ Charcoal Sticks™ Minster™ Satin™ Stippolyte™

More options available on request



Hardware and Security

Add the finishing touches to your new windows with traditionally-styled vertical slider hardware. Pole eyes, tilt knobs, sash lifts, sash locks and travel restrictors are fitted as standard, but we can also offer D handles if needed. All hardware is available in Chrome, Gold, White, Black or Satin Chrome to complement our range of colours.

Other additional options are available such as Georgian or Astragal glazing bars and trickle vents, to give your new windows a truly authentic and classical vertical slider look.

In addition to this, **ECOSlide** PVC-U sash windows are designed to be extremely safe and secure. High-performance locking systems keep your home safe from potential intruders to give you extra peace of mind.

For added safety, we also offer the option of a 'Fire Egress' window design to provide emergency escape.

Trickle Vents

To comply with the requirements of Part F of Building Regulations, which governs ventilation, **ECOSlide** comes with the maximum number of trickle vents as standard.

If implemented poorly, trickle vents can ruin the appearance of a window. However, thanks to an ingenious design, **ECOSlide's** trickle vents are concealed, allowing the product to achieve Part F standard without spoiling their heritage aesthetics.

Security - Dwellings

APPROVED DOCUMENT



Document Q Windows

Security-dwelling became part of the Building regulations in England on 1st October 2015. The current 2015 edition of Document Q only applies to new dwellings. However, if a property was built to comply with Document Q then the replacement glazing will need to also comply. Ground floor, basement and other easily accessible windows should be secure windows. Secure windows should be manufactured to a design that are shown by test to meet the security requirements of PAS 24: 2022.

All easily accessible glazing should contain at least one pane of laminated glazing.

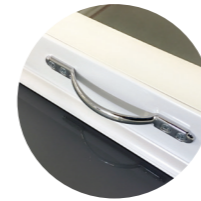
Components used on ECOSlide Document Q Windows

- ▶ Hardex High Security Cam Lock - fitted with 4 screws
- ▶ Hardex High Security Keep - fitted with 5 screws
- ▶ Document Q Snap Latch - fitted with metal latch
- ▶ Spacer - fitted to sash
- ▶ Aluminium Support - fits into frame to support snap latches
- ▶ Jam Blocks - fit on top of the sash to stop movement
- ▶ Aluminium Re-enforcements - fitted as standard in all Document Q windows



Trickle Vents

Cleverly positioned trickle vents allow the window to meet Part F of Building Regulations without spoiling its aesthetic appeal.



D Handle

These optional easy-grip handles can be used in place of pole eyes or sash lifts, and can be fitted externally on the bottom of the top sash for ease of operation.



Pole Eyes

Used for opening and closing the top sash. One pole eye is fitted to windows up to 479mm wide. Two are fitted on windows 480mm wide and over.



Travel Restrictors

Provides enhanced security and safety for your vertical sliding sash windows. Used to restrict the opening of the window to just 100mm. Key operated.



Tilt Knobs

Allow inward tilting of the sliding sashes for easy and safe cleaning from inside the home. Two tilt knobs are fitted as standard.



Sash Locks

Locks both bottom and top sashes firmly in place when the window is fully closed. Key lockable. One sash lock is fitted to windows up to 799mm. Two are fitted on windows 800mm wide and over.



Toughened Glass

Fitted in both top and bottom sashes as standard.



Sash Lifts

Used for opening and closing the bottom sash. One sash lift is fitted to windows up to 479mm wide. Two are fitted on windows 480mm wide and over.



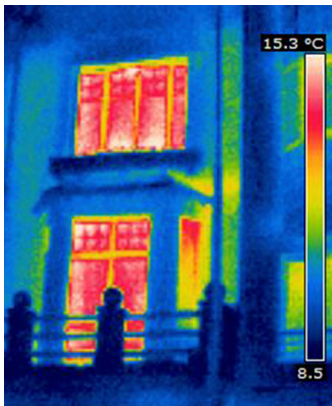
Security Bar

This specially-designed feature is an integral part of the window cill which significantly increases security, to help prevent potential intruders using tools or excessive force to try and lever open the bottom sliding sash and gain entry.



Energy-Efficiency & Ratings


Enjoy a warmer, more comfortable home with energy-efficient sash windows



Windows are given energy ratings based on their ability to insulate your home. In response to tightening government regulations on sustainability, **ECOSlide** now offers A+ rated energy-efficiency as standard.

Putting the style back into your home with **ECOSlide** will make your home a warmer and more comfortable place to live, saving on your energy bills year on year.

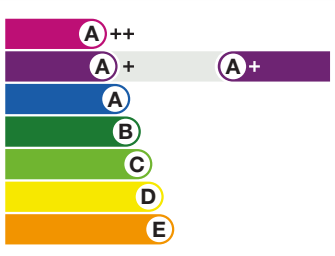
Would you like to learn more about how **ECOSlide** can help you cut both your carbon footprint and your energy bills?




Energy Window

Proven Performance.

Victorian Sliders
Standard Vertical Sliding Sash Window
A+ Rated





Licence No. _____
Review Date. 31/12/2024
To verify this licence please visit bfrc.org

This label is not a statutory requirement. It is a voluntary label provided as a customer service to allow consumers to make informed decisions in the energy performance of competing products.
© Only to be reproduced by permission of British Fenestration Rating Council Ltd

E&OE: Please note the information contained in this brochure is subject to change, and improvements in specifications are possible in future. Please check the relevant official websites for up-to-date information. **ECOSlide** are not accountable for any errors or misleading information printed in this guide.

Ref: TEAMFRAMES

Team
Frames

THE TRADE WINDOW CENTRE